



ID vs Non-ID Controlled

Consider these two **3 NPS SDR 17 Y-Laterals:**

ID CONTROLLED



On the Left:
Hawkeye's ID Controlled, Fully Pressure rated y-lateral.
3 NPS DR 17 at all connections.

NON-ID CONTROLLED



On the Right:
A Non-ID Controlled, Fully Pressure rated y-lateral.
3 NPS DR 17 at all connections

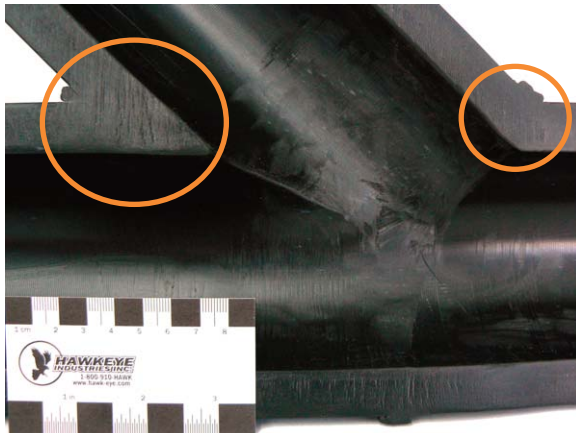
Same size, same fitting, right? **Wrong.**



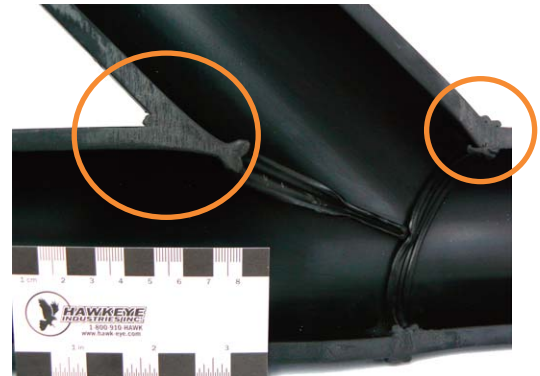
End-to-end-to-end ID Control:
3 NPS DR 17 ID throughout.



Non-ID Control:
DR 17 at the ends, but necks down to DR 11 on the inside.



Big pipe + Big Wall = stronger fitting:
The bigger pipe sized used to make the IDC fitting significantly increases the strength of the fitting.



Minimum required Wall thickness = Minimum strength
Compare the highlighted areas with the fitting on the left.
Which one do you think is stronger?