



Marshhawk Thief Hatch

This document contains the recommended procedures installing and maintaining a Hawkeye Marshhawk Thief Hatch.

Requirements

The Marshhawk has a standard 8" API flange connection. Other mounting options, such as ANSI flange or other API connections are accommodated with adaptor spools and risers. Consult the vapor control section of our website, or call us for more information.

Tools

- ▶ 3/4 in. Box / Socket Wrench
- ▶ 9/64 in. Allen Wrench
- ▶ 1/2 in. Box / Socket Wrench

Parts Required

QTY	Part
Installation	
▶ 1	Marshhawk Thief Hatch
▶ 1	8" API Tank Gasket
▶ 16	1/2 UNC x 1-3/4 Bolts & Nuts
▶ varies	2 ozsi and 1 ozsi Pressure Spacers as required.
Maintenance	
▶ 1	Replacement Pressure / Vacuum Gasket
▶	Dow Corning #4 Electrical Insul. Compound (or eq.)

Contents

A.) Installing the Marshhawk Thief Hatch

A1.) Hatch Installation

A2.) Pressure Spacer Adjustment

B.) Maintaining the Marshhawk Thief Hatch

B1.) Replacing Pressure / Vacuum Gasket

B2.) Relubrication

B3.) Antifreeze solutions

A.) Installing the Marshhawk Thief Hatch

A1.) Hatch Installation

1.)

Place Tank Gasket on the 8" API Tank Flange and align holes.

2.)

Mount Marshhawk on base gasket and align holes.

3.)

Fasten with the supplied 1/2 UNC Bolts and Nuts with a 3/4 Box or Socket Wrench

A2.) Pressure Spacer Adjustment

1.)

Remove the spider cage assembly by pressing down on spring retainer and rotating counter clockwise to disengage from J-slot. Lift spider-cage assembly straight out of the hatch body.

2.)

Use spring retainer to compress the spring. Remove the retainer screw and washer with the 1/2 wrench, and remove the spring retainer.

3.)

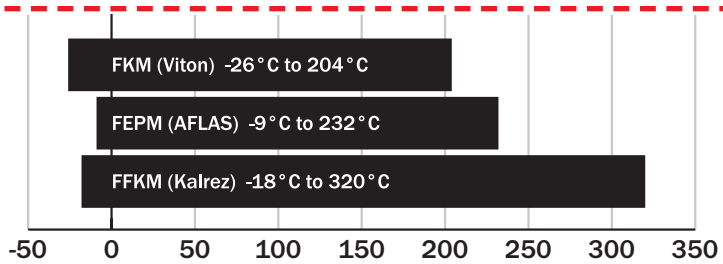
Add or remove pressure spacers to increase or decrease activation pressure, respectively. Each standard pressure spacer changes activation pressure by 2 ozsi. Follow directions in reverse to reassemble the thief hatch.

Hawkeye recommends activation pressure 2 ozsi below the tank's pressure rating.

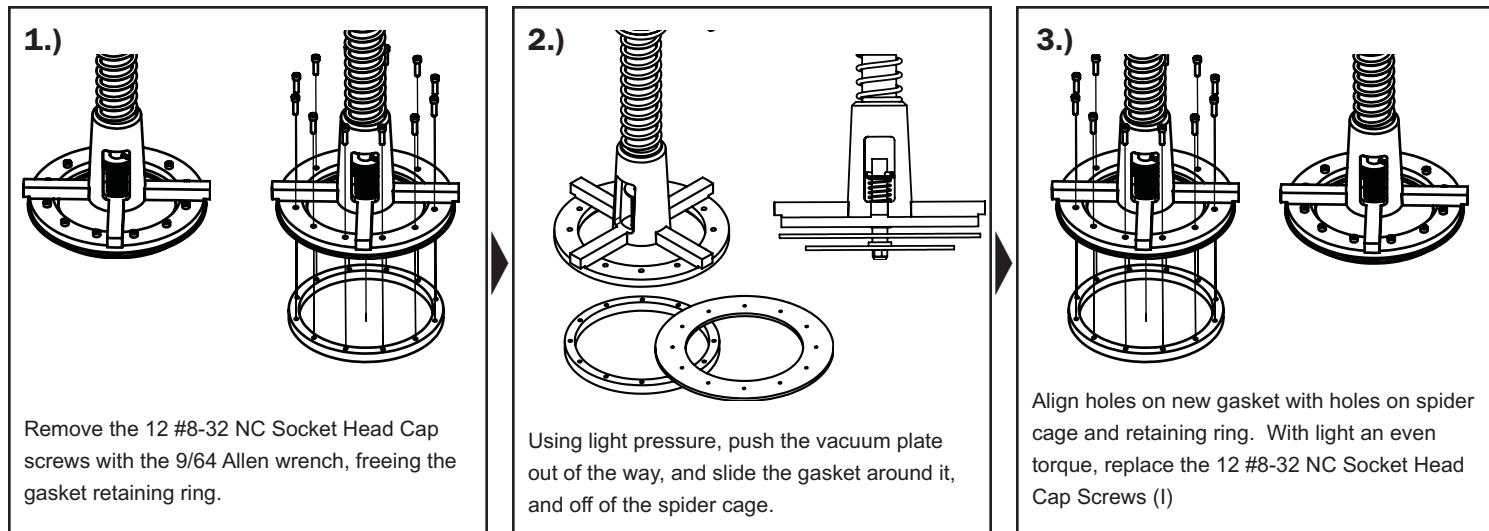
B.) Maintaining the Marshhawk Thief Hatch

B1.) Replacing the Pressure / Vacuum Gasket

Hawkeye offers three gasket materials for the Marshhawk Thief Hatch:FKM (Viton), FEPM (Aflas) and FFKM (Kalrez). Each with different properties, temperature ranges and chemical compatibilities. Please ensure the selected gasket materials suitable for your application prior to ordering a replacement. Call us for assistance. The following operating temperature range table is provided for information only.



Remove the spider cage assembly from the hatch body as in Section A2, Step 1 before proceeding.



B2.) Relubrication

Generally, the more active the vent action of the hatch, the more frequent relubrication should be performed. Specific relubrication requirements are application specific, and are determined by the following variables:

- ▶ Chemical exposure
- ▶ Elevated pressure
- ▶ High flow velocity
- ▶ Elevated temperature
- ▶ Utilization (i.e. if hatch is primary relief)

Hawkeye factory-applies Dow Corning 4 Electrical Insulating Compound to the vacuum and pressure gasket, and recommends the same compound for any field relubrication.

- ▶ Excellent seal and release properties
- ▶ -57°C to 204°C
- ▶ Moisture Resistant
- ▶ 4.5% Bleed, 24 hr/200°C
- ▶ 1.4% Evaporation, 24 hr/200°C
- ▶ Non-toxic and odorless

B3.) Antifreeze Solutions

It is not recommended to use any kind of antifreeze solution on a normally-operating Marshhawk thief hatch -- even as a preventative measure. However, if there is evidence of the hatch icing up, a compound with suitable gasket compatibility is required. Please consult the supplied chart and ensure that the solution used will not compromise the sealing effectiveness of the Marshhawk Thief Hatch.

Antifreeze Solution	Gasket Material		
	FKM (Viton)	FEPM (AFLAS)	FFKM (Kalrez)
Methanol	4	1	1
Ethanol	3	1	1
Isopropanol	1	1	1
Ethylene Glycol	1	1	1

1 - Satisfactory 2 - Fair 3 - Doubtful 4 - Unsatisfactory