



Risers, Spools & Pipe-aways

Hawkeye offers Riser, Spool and Pipe-away System adapters to complement our thief hatch product line.

Hatch Risers

Hatch risers are used to mount Marshhawk Thief Hatches to tanks with sloped roofs. The riser accommodates the slope angle of the roof, allowing the hatch to sit in an upright orientation, while keeping the internals of the hatch within the heat envelope of the tank. The risers have 8" API mounting flanges on top and bottom, and a canted at the standard 12:1 roof pitch.

Adapter Spools

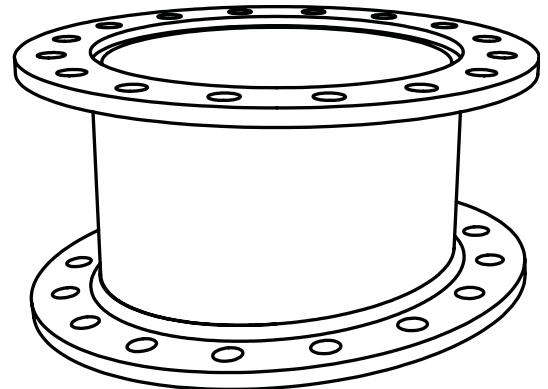
Adapter spools are used to mount a Marshhawk or TVTH to a tank lacking the standard 8" API mounting pattern. The spool height accommodates fastener installation, while keeping the Marshhawk internals within the heat envelope of the tank. Common adapter spools include 8 and 12 150# ANSI, as well as the API 18" and 22" oblong bolt patterns. Custom mounting patterns can be accommodated, call us for more information.

Pipe-away System

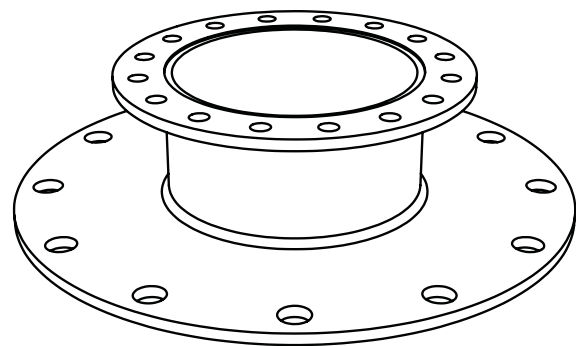
The Pipe-away system provides means to capture emissions from a tank while still maintaining the pressure- and vacuum -relief characteristics of a Marshhawk thief hatch. The Pipe-away System sports a 4" 150# ANSI flange connection to pipe vapors away, in addition to a 8" API flange at the top that can accommodate a TVTH. The Pipe-away ships standard with a modified Marshhawk, blind 8" API flange, gaskets and tank mounting hardware.

Construction

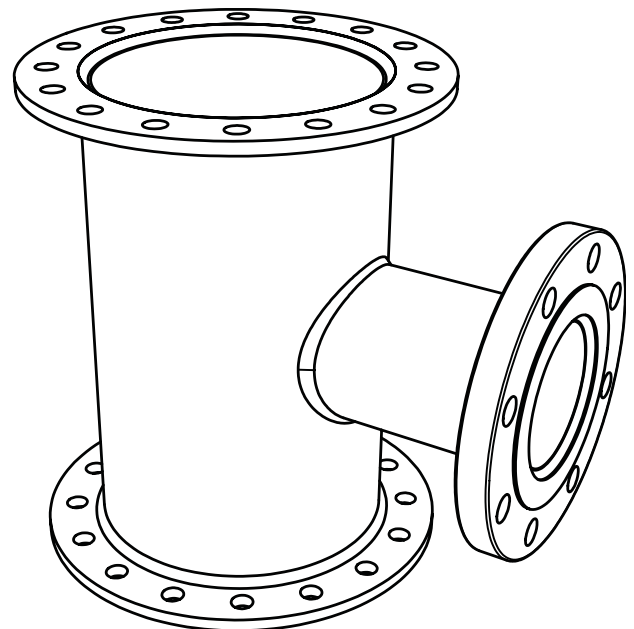
Risers, spools and pipe-away systems are welded carbon steel, and coated with high temperature flat-black paint.



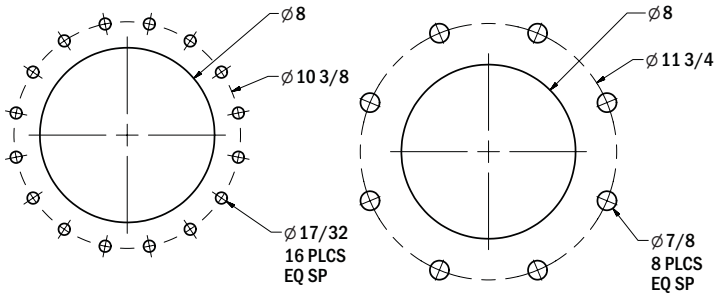
Above: Hatch Riser, with 12:1 Pitch
Below: 12 150# ANSI to 8 API Spool Adapter



Below: Pipe Away with 4 150# ANSI Flange pipe connection

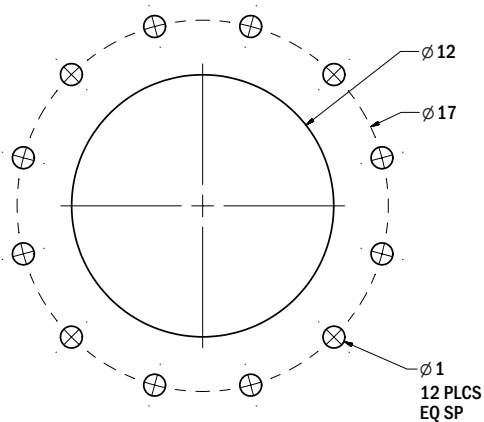


Common Spool Adapter Bolting Patterns

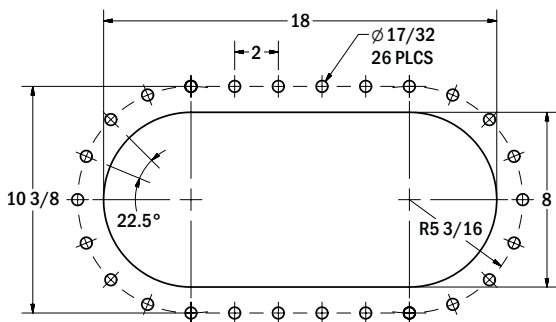


8 API API 12B Figure 3.9

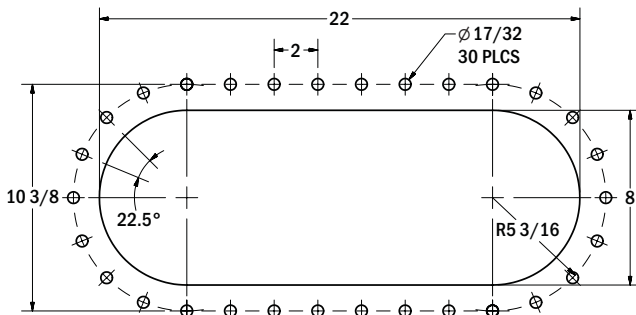
8 150# ANSI ANSI B16.5



12 150# ANSI ANSI B16.5

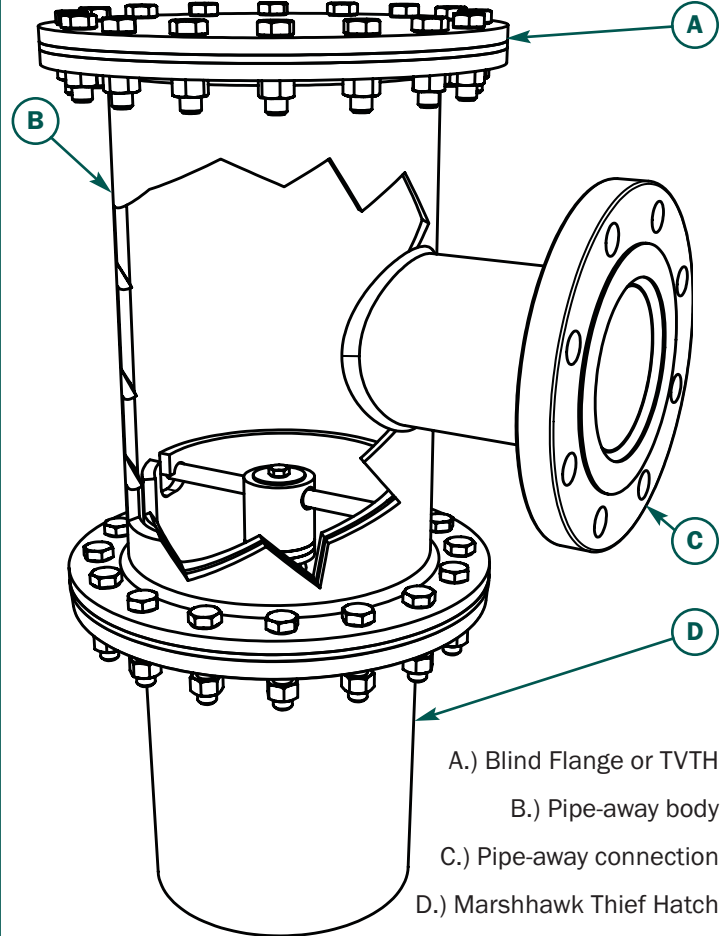


API 8 X 18 Oblong Pattern API 12B, Figure 3.10



API 8 X 22 Oblong Pattern API 12B, Figure 3.11

Pipe-Away Configuration



- A.) Blind Flange or TVTH
- B.) Pipe-away body
- C.) Pipe-away connection
- D.) Marshhawk Thief Hatch

Ordering Information

RISER

- 1.) Specify the 12:1 Hatch Riser
- 2.) Specify Tank Connection (8 API Standard)

SPOOL ADAPTER

- 1.) Specify Spool Adapter
- 2.) Specify Tank Bolt Pattern (see back page for typical connections)

PIPE-AWAY SYSTEM

- 1.) Specify Pipe-away System
- 2.) The following steps are the same as ordering a Marshhawk
 - a.) Specify Marsh Hawk Thief Hatch
 - b.) Specify Pressure Release Setting (2 - 16 oz / in2)
 - c.) Specify Seal Material
- 3.) Specify Pipe-away connection (4 150# ANSI Standard)